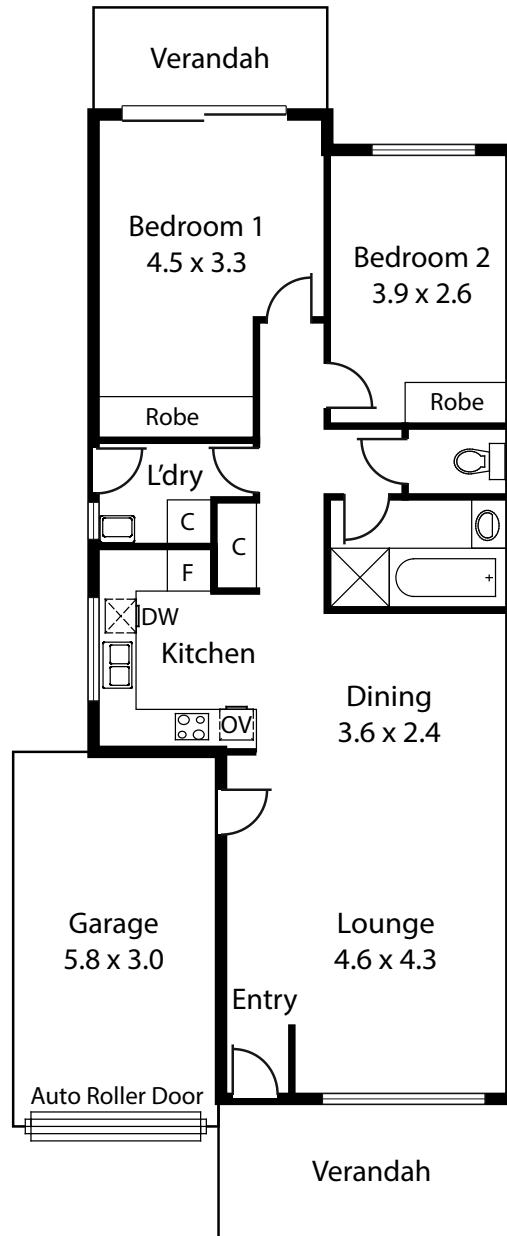


Flinders



Features

- 9' Ceilings
- Decorative cornices & ceiling roses
- Insulated ceilings, external walls & bathroom
- IXL 'Tastic' light/heater
- Night light in passage
- Quality carpets & fittings
- Ducted reverse cycle air conditioning
- Linen press
- Wall oven
- Dishwasher
- Broom/storage cupboard
- Security doors - front & sliding
- Door chimes
- Private fully enclosed backyard
- Manually operated sprinkler system (front & rear yards)
- 24 Hour call system with pendants
- Smoke alarm